

1,438+ Sq Ft  
2 Bedrooms, 2 Baths  
Covered Patio  
2-Car Garage

PRELIMINARY



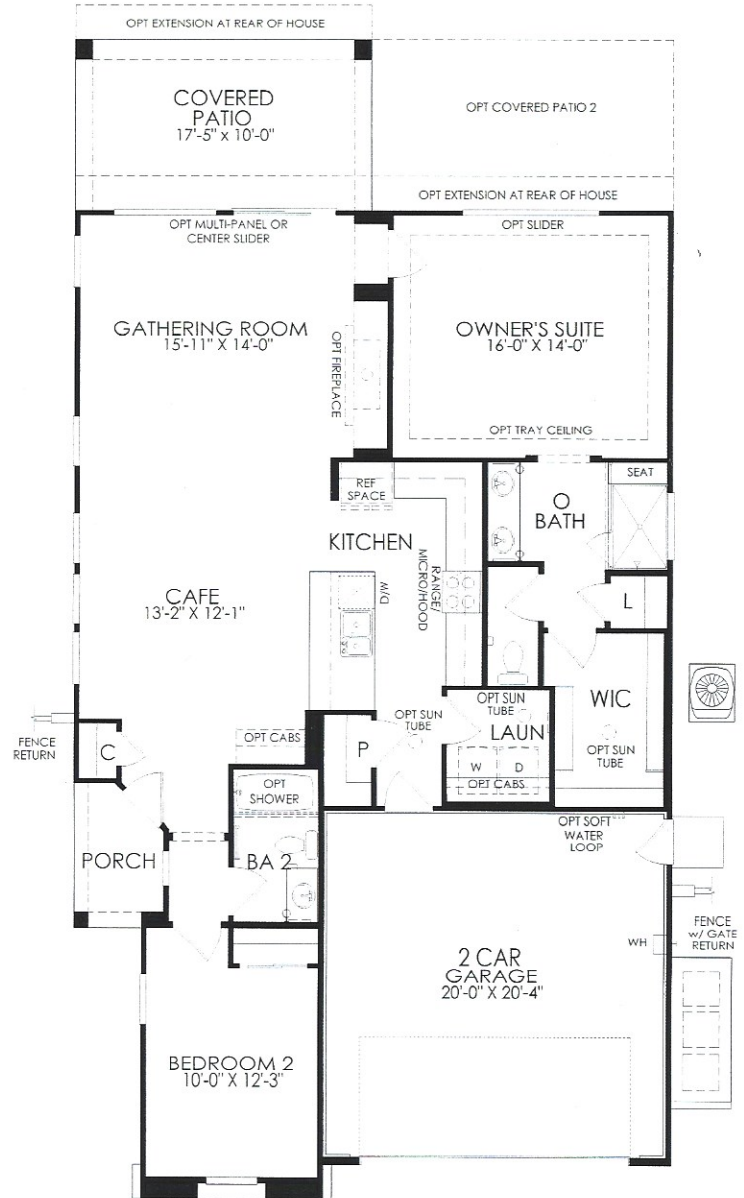
A-Spanish



B-Villa



C-Tuscan



Single Level





# SOLITUDE

1,657+ Sq Ft  
2 Bedrooms, 2 Baths  
Den, Covered Patio  
2-Car Garage

PRELIMINARY



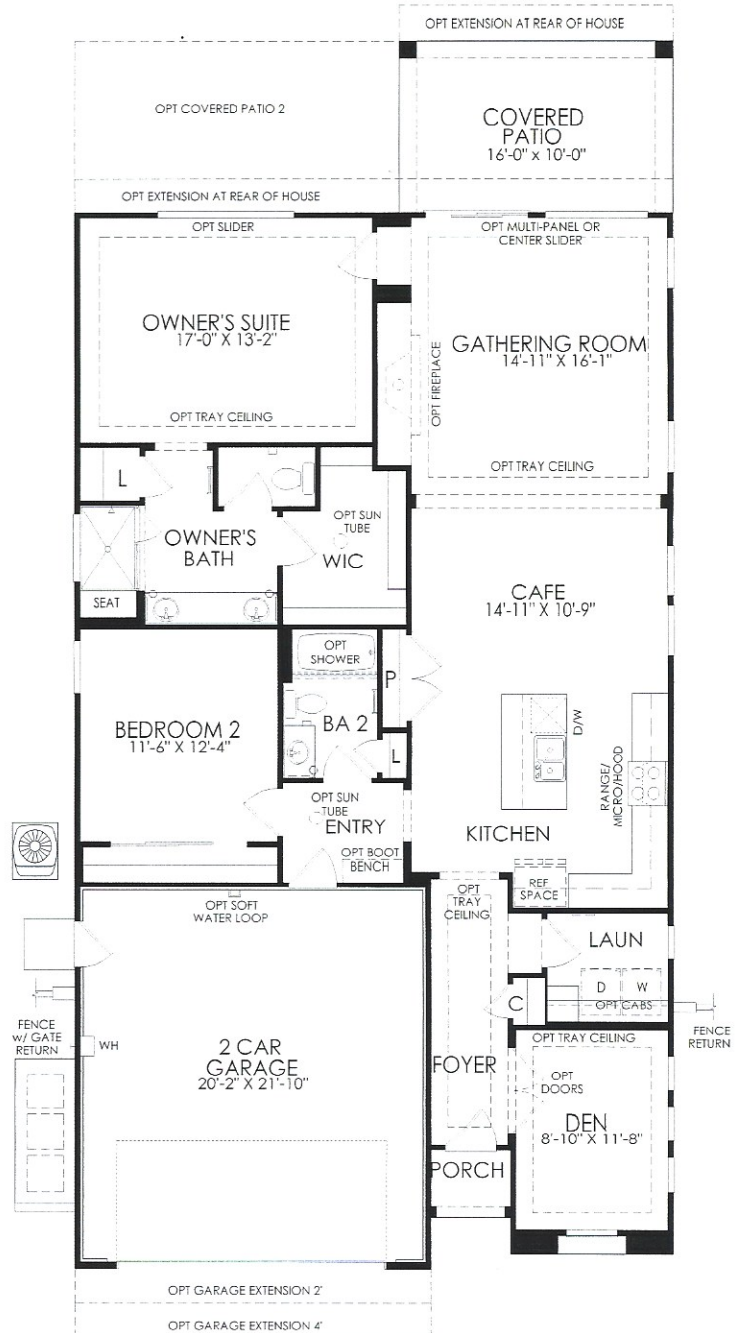
A-Spanish



B-Villa



C-Tuscan



Single Level





1,770+ Sq Ft  
2-3 Bedrooms, 2 Baths  
Den, Covered Patio  
2-Car Garage

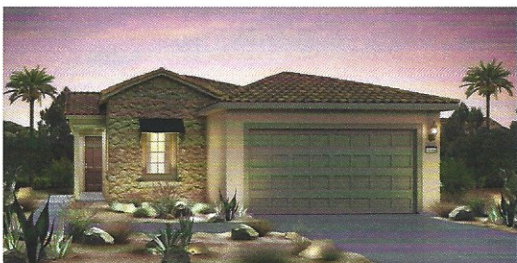
PRELIMINARY



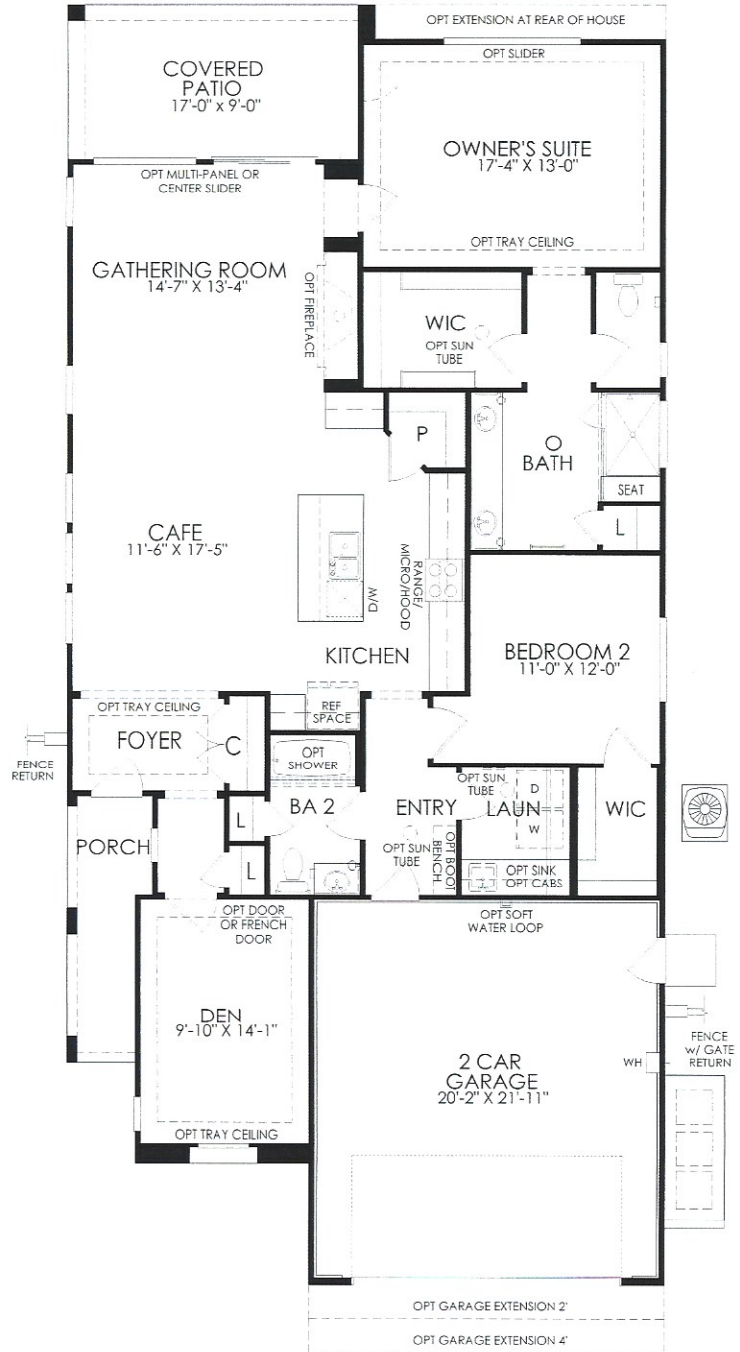
A-Spanish



B-Villa



C-Tuscan



Single Level





### Distinctive Exteriors

- Post tension slab
- One-coat stucco system
- Therma-Tru™, 8' front entrance door
- Beige dual glazed vinyl windows with low-E glass
- Schlage® exterior front door hardware with oil rubbed bronze finish on exterior (*Expedition*), satin finish on interior
- 1/2 hp LiftMaster garage door opener
- Front yard landscaping with automatic sprinklers and timer
- Exterior lighting fixture at garage

### Elegant Interiors

- Designer-selected 13" x 13" hand-set tile flooring in Entry, Kitchen, Cafe, Laundry, and Baths
- Upgraded, low-V.O.C. carpet and pad throughout
- Elegant bullnose on drywall corners (except inside closets and on window returns)
- 8' 0" CraftMaster® Carrara 2-panel interior doors and closet doors (*Getaway*)
- Elegant 3 1/4" baseboard trim and 2 1/4" door casing throughout (*Getaway*)
- Decora® rocker switches
- Designer-selected, low-V.O.C., custom interior paint throughout (*Solitude ceiling*)
- USB outlet in Kitchen
- LED recessed lighting at select locations
- Prewired for ceiling fans in Owner's Suite, Gathering Room and Secondary Bedrooms
- Laundry Room base cabinetry with concealed hinges, quartz countertop (*Getaway*)

### Gourmet Kitchens

- 36" birch cabinetry with concealed hinges in choice of color
- Slab granite countertops in choice of two colors with 6" backsplash
- Whirlpool® 4-burner, 5.0 cu. ft. freestanding gas range with Accubake® temperature management system in stainless steel (*Getaway*)
- Whirlpool® 1.7 cu. ft. over-the-range microwave/hood combination in stainless steel (*Getaway*)

- Whirlpool® ENERGY STAR-certified, Sensor Cycle dishwasher (*Getaway*)
- Moen® classic stainless single-handle, pull-out faucet
- Double basin stainless steel undermount sink with Insinkerator® disposal (*Solitude*)
- Pre-plumbed for refrigerator icemaker

### Luxurious Baths

- Quartz surround and fiberglass pan at Owner's Bath shower with clear glass enclosure (*Getaway*)
- Sterling Ensemble Medley tub and shower surrounds in Secondary Baths (*Getaway*)
- Quartz countertops with 4" backsplash in Owner's Bath and Secondary Baths (*Getaway*)
- Gerber® low-flow, 1.28 gpf elongated, comfort height white toilets throughout
- 26" beveled frame medicine cabinet in Owner's Bath
- 34 1/2" birch cabinetry with concealed hinges in Owner's Bath and Secondary Baths
- Moen® Brantford Series chrome fixtures

### Energy Features

- Sustainable wall and ceiling insulation
- Blown-in and batt insulation in Attic
- 80% energy efficient gas furnace
- Honeywell programmable wifi-enabled thermostat control
- Rinnai® tankless water heater
- Lennox® or equivalent 14 SEER central HVAC system (per plan)
- 8-2.52kw solar panels from Solar City-20 year lease (option to purchase and/or upgrade)

### Pulte Smart Home Technology and Innovation

- 2 port outlet with (1) CAT6 & (1) RG6 in Gathering Room (per plan)
- Centrally located Structure wired enclosure with 110v power outlet
- Pre-wired location(s) for future wireless access points (per plan)

**NOTE:** Plan names in parentheses indicate the location of a modeled feature.





# SANCTUARY

1,832+ Sq Ft  
2 Bedrooms, 2-2.5 Baths  
Den, Covered Patio  
2-Car Garage

PRELIMINARY



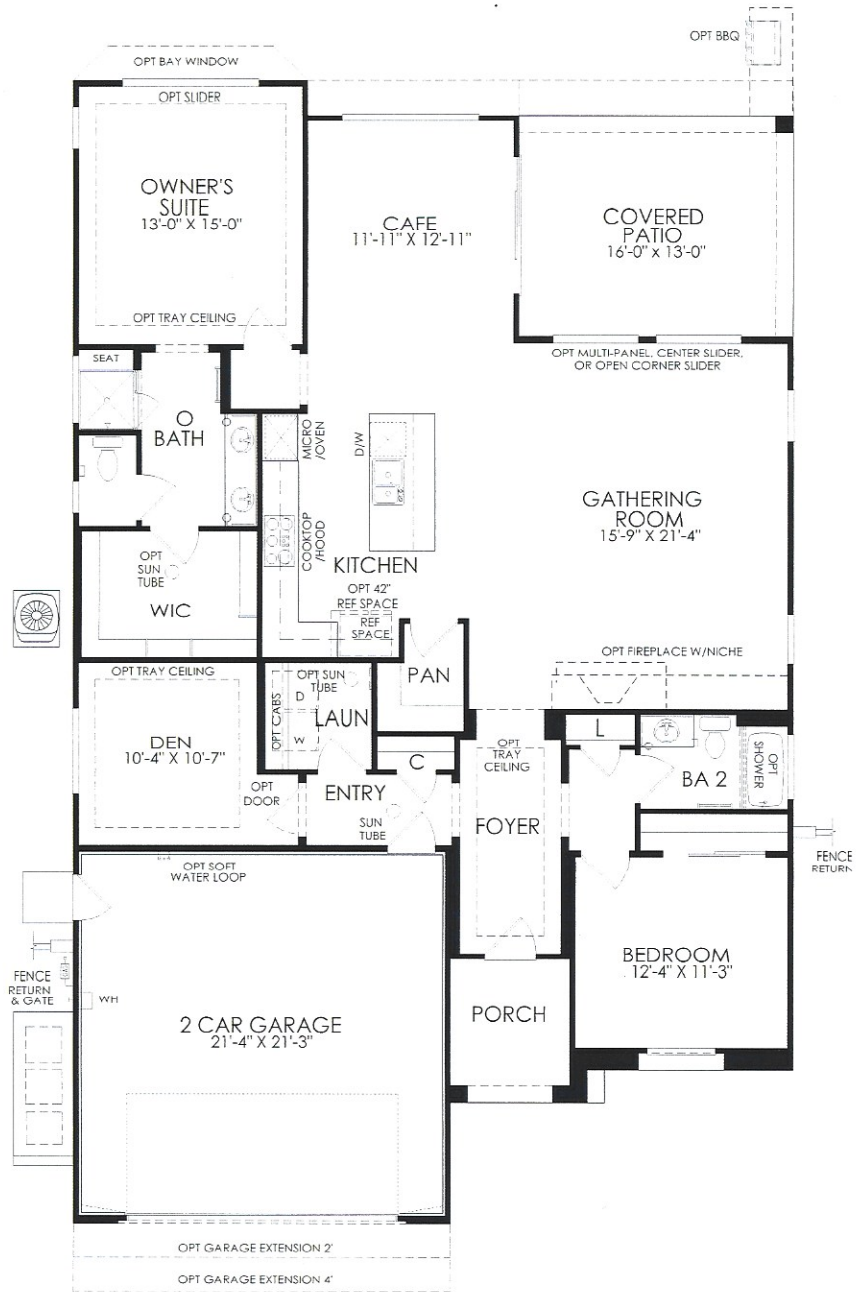
A-Spanish



B-Prairie



C-Tuscan



Single Level





# HAVEN

1,858+ Sq Ft  
2-3 Bedrooms, 2 Baths  
Den, Covered Patio  
2-Car Garage

PRELIMINARY



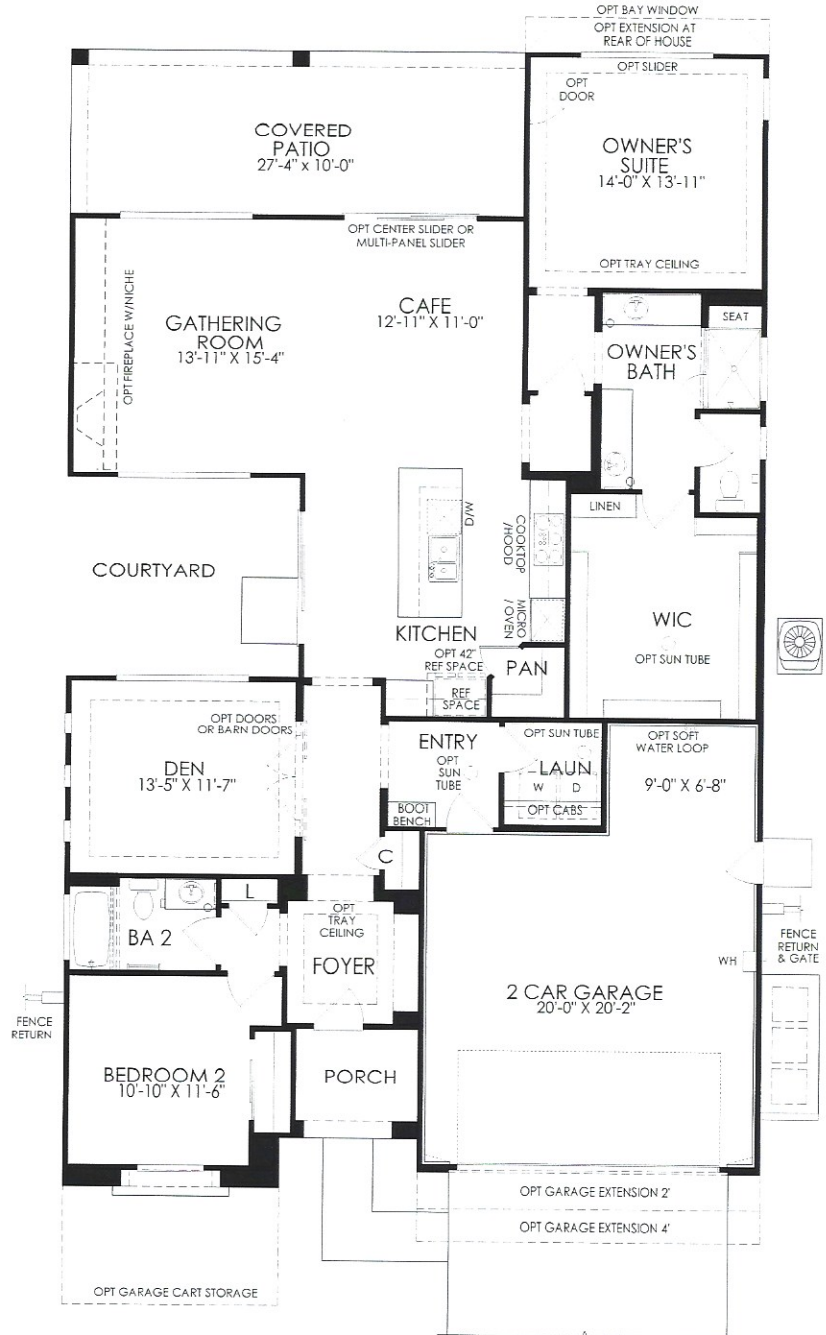
A-Spanish



B-Prairie



C-Tuscan



Single Level





2,008+ Sq Ft  
2-3 Bedrooms, 2 Baths  
Den, Covered Patio  
2.5-Car Garage

PRELIMINARY



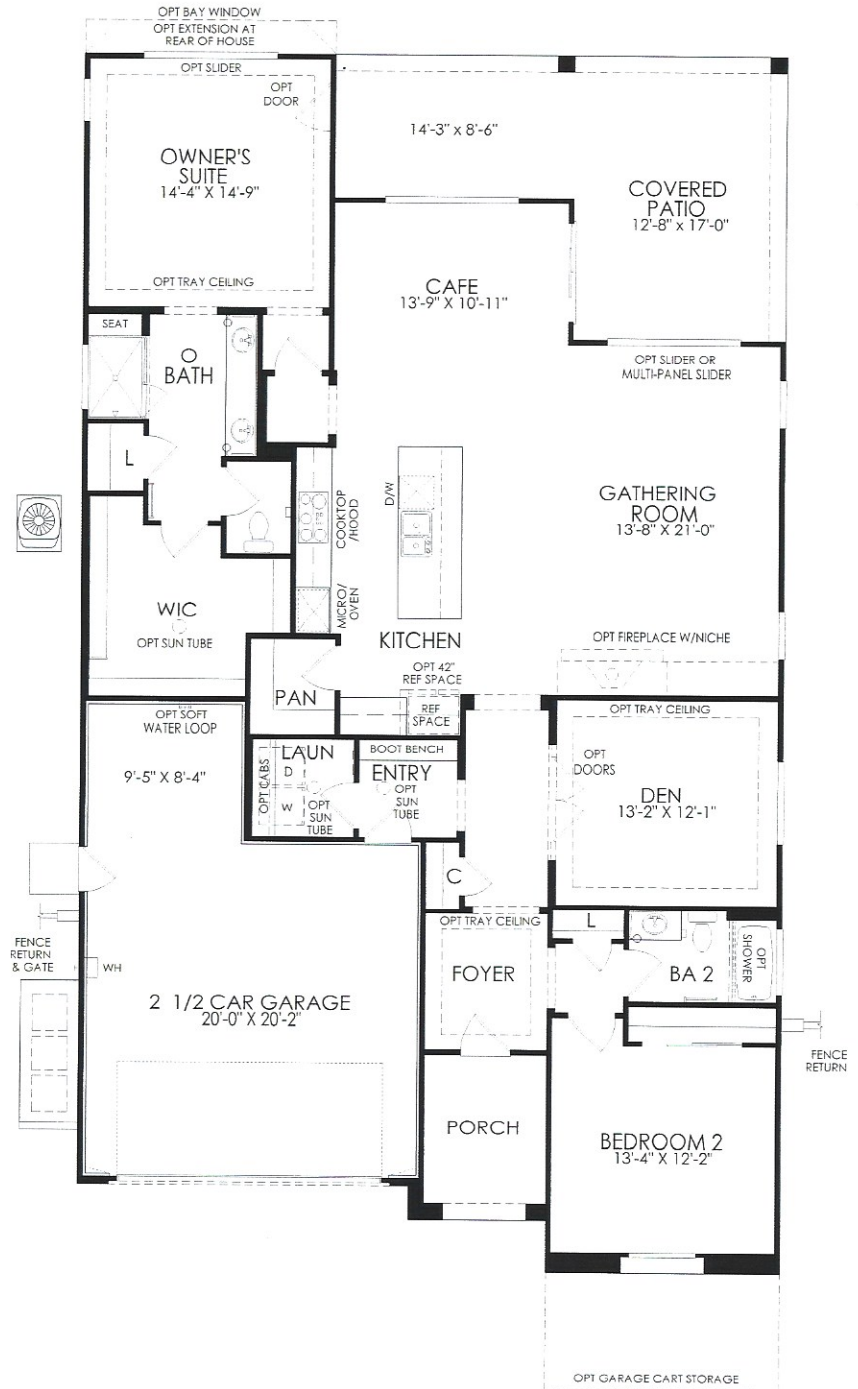
A-Spanish



B-Prairie



C-Tuscan



Single Level





REFUGE

2,187+ Sq Ft  
2-3 Bedrooms, 2.5 Baths  
Den, Covered Patio  
2.5-Car Garage

PRELIMINARY



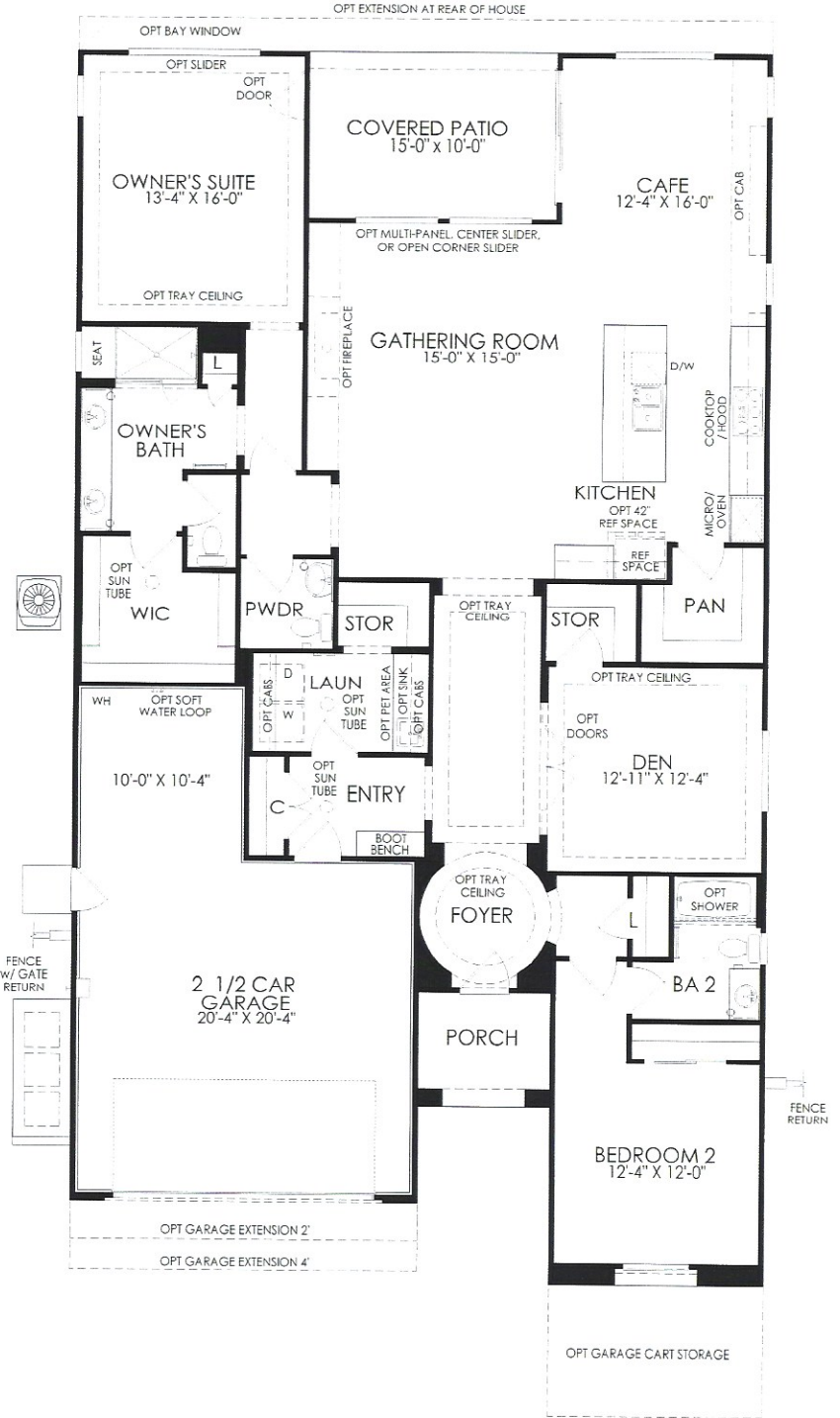
A-Spanish



B-Prairie



C-Tuscan



Single Level





### Distinctive Exteriors

- Post tension slab
- One-coat stucco system
- Therma-Tru™, 8' front entrance door
- Beige dual glazed vinyl windows with low-E glass
- Schlage® exterior front door hardware with oil rubbed bronze finish on exterior (*Expedition*), satin finish on interior
- 1/2 hp LiftMaster garage door opener
- Schlage® Seville garage man door
- Front yard landscaping with automatic sprinklers and timer
- Exterior lighting fixture at garage

### Elegant Interiors

- Designer-selected 13" x 13" hand-set tile flooring in Entry, Kitchen, Laundry, Cafe, and Baths
- Upgraded, low-V.O.C. carpet and pad throughout
- Elegant bullnose on drywall corners (except inside closets and on window returns)
- 8' 0" CraftMaster® Carrara 2-panel interior doors and closet doors (*Getaway*)
- Elegant 4 1/4" baseboard trim and 2 1/4" door casing throughout (*Preserve*)
- Decora® rocker switches
- Designer-selected, low-V.O.C., custom interior paint throughout (*Solitude* ceiling)
- USB outlet in Kitchen
- LED recessed lighting at select locations
- Prewired for ceiling fans in Owner's Suite, Gathering Room and Secondary Bedrooms
- Laundry Room base cabinetry with concealed hinges, quartz countertop (*Getaway*)

### Gourmet Kitchens

- 36" maple cabinetry with crown molding and concealed hinges in choice of color
- Slab granite countertops in choice of two colors with full backsplash at cooktop (*Sanctuary*)
- Whirlpool® 36" 5-burner gas cooktop in stainless steel
- Whirlpool® 30" built-in combination microwave wall oven with SteamClean® in stainless steel (*Sanctuary*)

- Whirlpool® ENERGY STAR-certified dishwasher with 1-hour wash cycle (*Sanctuary*)
- Moen® classic stainless single-handle, pull-out faucet
- Double basin stainless steel undermount sink with Insinkerator® disposal (*Solitude*)
- Pre-plumbed for refrigerator icemaker

### Luxurious Baths

- Sterling Ensemble Medley tub and shower surrounds in Secondary Baths (*Getaway*)
- Quartz surround and fiberglass pan at Owner's Bath shower with clear glass enclosure (*Getaway*)
- Quartz countertops with 4" backsplash in Owner's Bath and Secondary Baths (*Getaway*)
- Gerber® low-flow, 1.28 gpf elongated, comfort height white toilets throughout
- 26" beveled frame medicine cabinet in Owner's Bath
- 34 1/2" maple cabinetry with concealed hinges in Owner's Bath and Secondary Baths
- Moen® Brantford Series chrome fixtures

### Energy Features

- Sustainable wall and ceiling insulation
- Blown-in and batt insulation in Attic
- 80% energy efficient gas furnace
- Honeywell programmable wifi-enabled thermostat control
- Rinnai® tankless water heater
- Lennox® or equivalent 14 SEER central HVAC system (per plan)
- 8-2.52kw solar panels from Solar City-20 year lease (option to purchase and/or upgrade)

### Pulte Smart Home Technology and Innovation

- 2 port outlet with (1) CAT6 & (1) RG6 in Gathering Room (per plan)
- Centrally located Structure wired enclosure with 110v power outlet
- Pre-wired location(s) for future wireless access points (per plan)

**NOTE:** Plan names in parentheses indicate the location of a modeled feature.





# SERENITY

2,329+ Sq Ft  
2-3 Bedrooms, 2-2.5 Baths  
Den, Formal Dining, Covered Patio  
2.5-3-Car Garage

PRELIMINARY



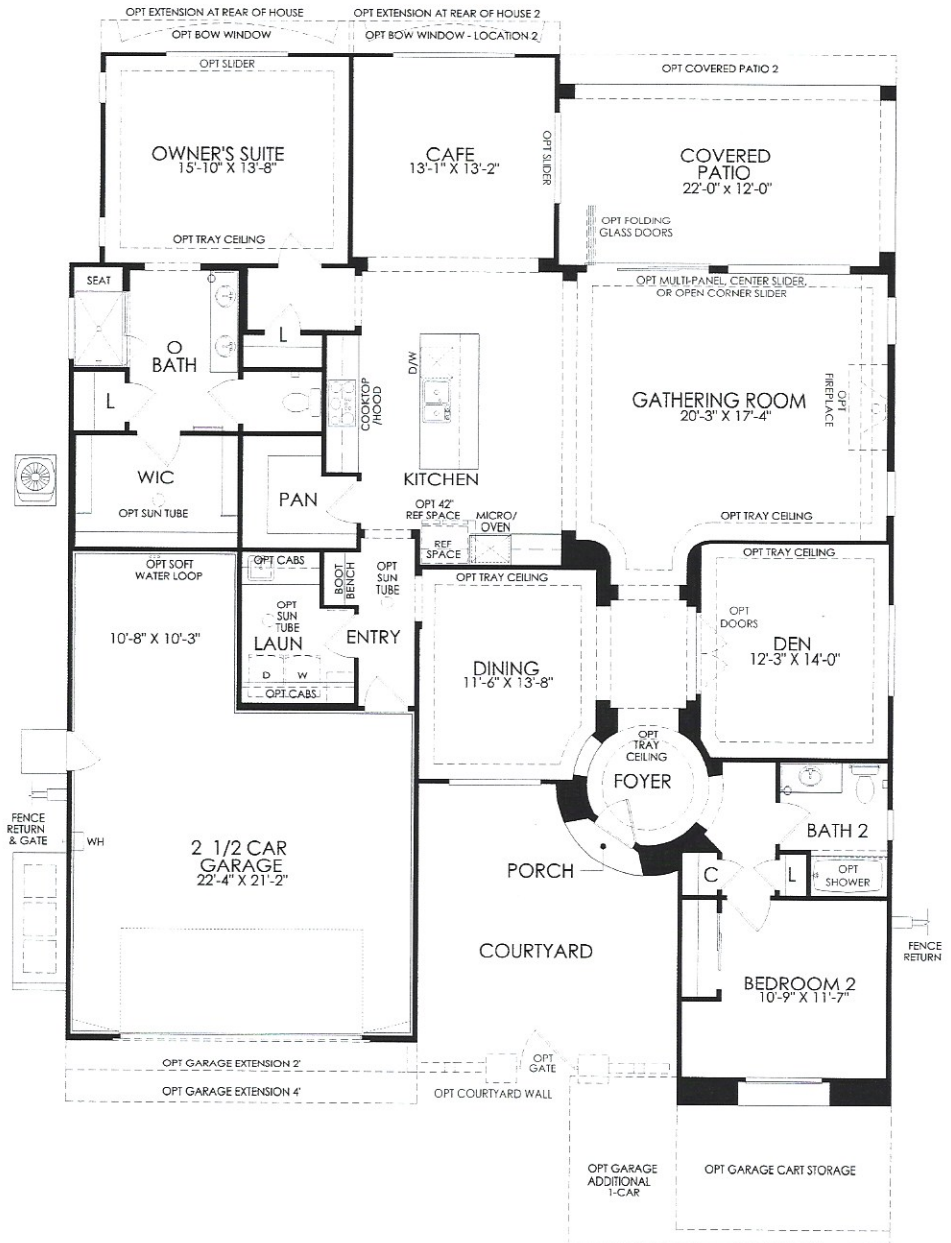
A-Spanish



B-Prairie



C-Tuscan



Single Level





2,504+ Sq Ft  
2-3 Bedrooms, 2-2.5 Baths  
Den, Formal Dining, Covered Patio  
2- to 3-Car Garage, Golf Cart Storage

PRELIMINARY



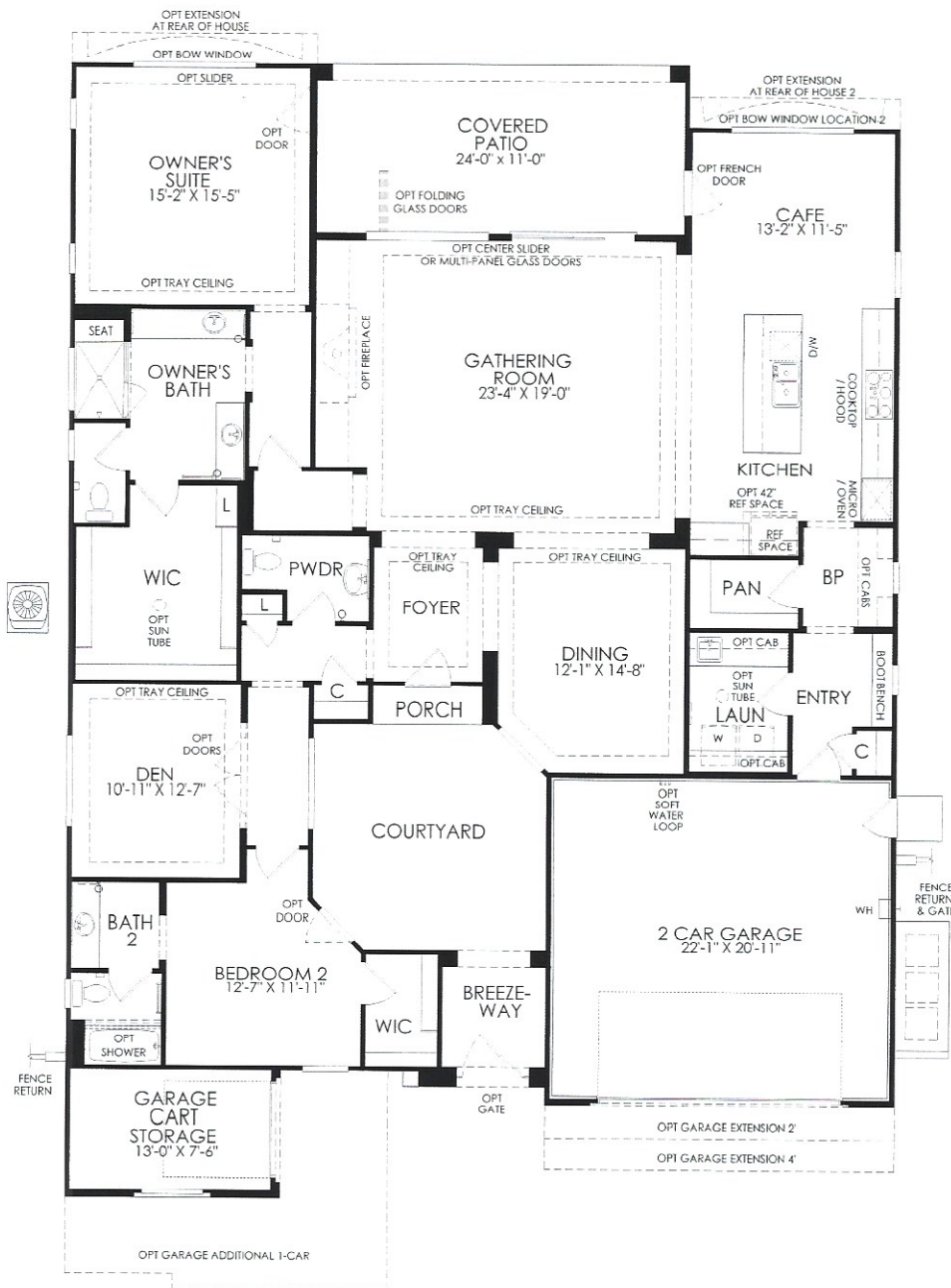
A-Spanish



B-Prairie



C-Tuscan



Single Level





# Encore Series

## VOYAGE

Del Webb®  
RANCHO MIRAGE

2,726+ Sq Ft  
2-3 Bedrooms, 2.5-3.5 Baths  
Flex, Covered Patio  
2-Car Garage, Golf Cart Storage

PRELIMINARY



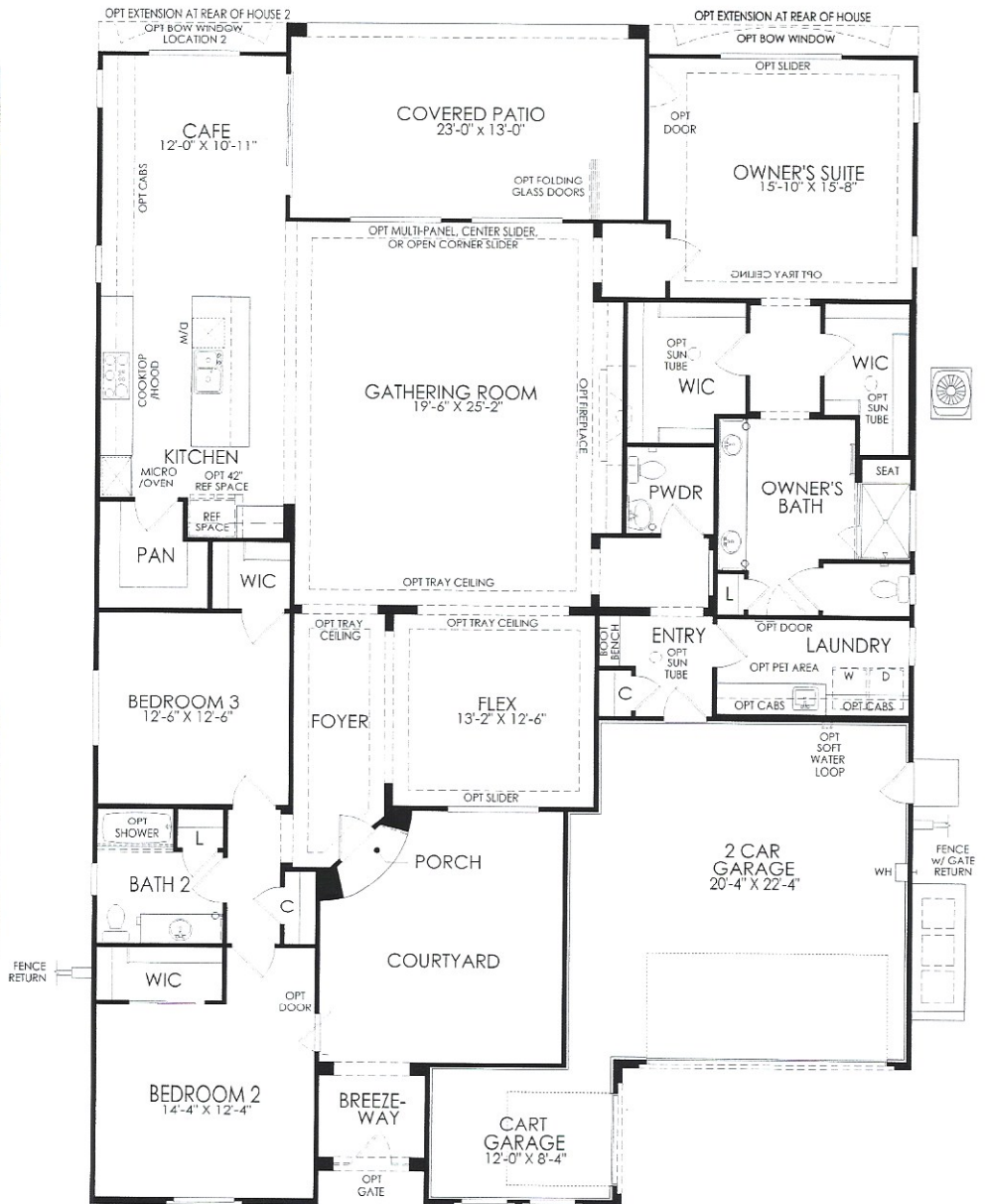
A-Spanish



B-Prairie



C-Tuscan



Single Level



In our continuing effort to improve our product, Del Webb reserves the right to make changes or modifications to plan specifications, materials, features, or floor plans without notice. Room dimensions are approximate and actual square footage may vary by elevation. Please see a sales associate for details. Renderings are for illustrative purposes only and are not intended to be an actual representation of a specific home being offered. Square footages listed are approximate. This material shall not constitute a valid offer in any state where prior registration is required or if void by law. At least one resident must be 21 years of age or older and additional restrictions apply. Additional conditions, limitations, and restrictions apply see a sales associate for details. Pulte Home Corporation is a licensed California real estate broker (Lic. # 20238229). © 2018 Pulte Home Company, LLC. All rights reserved. 7.12.2018



## FEATURES

PRELIMINARY

**Distinctive Exteriors**

- Post tension slab
- One-coat stucco system
- Therma-Tru™, 8' front entrance door
- Beige dual glazed vinyl windows with low-E glass
- Schlage® exterior front door hardware with oil rubbed bronze finish on exterior (*Expedition*), satin finish on interior
- 1/2 hp LiftMaster garage door opener
- Schlage® Seville garage man door
- Front yard landscaping with automatic sprinklers and timer
- Exterior lighting fixture at garage

**Elegant Interiors**

- Designer-selected 13" x 13" hand-set tile flooring in Entry, Kitchen, Laundry, Cafe, and Baths
- Upgraded, low-V.O.C. carpet and pad throughout
- Elegant bullnose on drywall corners (except inside closets and on window returns)
- 8' 0" CraftMaster® Carrara 2-panel interior doors and closet doors (*Getaway*)
- Elegant 4 1/4" baseboard trim and 2 1/4" door casing throughout
- Decora® rocker switches
- Designer-selected, low-V.O.C., custom interior paint throughout (*Solitude ceiling*)
- USB outlet in Kitchen
- LED recessed lighting at select locations
- Prewired for ceiling fans in Owner's Suite, Gathering Room and Secondary Bedrooms
- Laundry Room base cabinetry with concealed hinges, quartz countertop, and sink

**Gourmet Kitchens**

- 36" / 42" staggered raised panel maple cabinetry with crown molding and concealed hinges in choice of color
- Slab granite countertops in choice of two colors with full backsplash at cooktop (*Sanctuary*)
- Kitchenaid® 36" 5-burner gas cooktop in stainless steel
- Kitchenaid® 30" built-in combination microwave wall oven with SteamClean® in stainless steel

- Kitchenaid® ENERGY STAR-certified dishwasher with dynamic wash arms
- Moen® classic stainless single-handle, pull-out faucet
- Double basin stainless steel undermount sink with Insinkerator® disposal (*Solitude*)
- Pre-plumbed for refrigerator icemaker

**Luxurious Baths**

- Kohler tub with quartz shower surrounds in Secondary Baths (*Serenity*)
- Quartz surround and fiberglass pan at Owner's Bath shower with clear glass semi-frameless enclosure
- Quartz countertops with 4" backsplash in Owner's Bath and Secondary Baths (*Getaway*)
- Gerber® low-flow, 1.28 gpf elongated, comfort height white toilets throughout
- 26" beveled frame medicine cabinet in Owner's Bath
- 34 1/2" maple cabinetry with concealed hinges in Owner's Bath and Secondary Baths
- Moen® Brantford Series chrome fixtures

**Energy Features**

- Sustainable wall and ceiling insulation
- Blown-in and batt insulation in Attic
- 80% energy efficient gas furnace
- Honeywell programmable wifi-enabled thermostat control
- Rinnai® tankless water heater
- Lennox® or equivalent 14 SEER central HVAC system (per plan)
- 8-2.52kw solar panels from Solar City-20 year lease (option to purchase and/or upgrade)

**Pulte Smart Home Technology and Innovation**

- 2 port outlet with (1) CAT6 & (1) RG6 in Gathering Room (per plan)
- Centrally located Structure wired enclosure with 110v power outlet
- Pre-wired location(s) for future wireless access points (per plan)

**NOTE:** Plan names in parentheses indicate the location of a modeled feature.

